



WILMAR LIQUID STOCKFEEDS PRODUCT RANGE INFORMATION




wilmar

THE SUPLAFLO® RANGE

SuplaFlo® is a co-product of Wilmar's BioEthanol Distillery at Sarina, where molasses is fermented in a unique Biostil process to produce ethanol. The **SuplaFlo** product is based on fermented molasses with simple sugars/volatiles removed and fortified with yeast.

The key nutritional benefits of the **SuplaFlo range** are:

- ✓ **YEAST**
- ✓ **ESSENTIAL AMINO ACIDS**
- ✓ **MICRONUTRIENTS**

YEAST

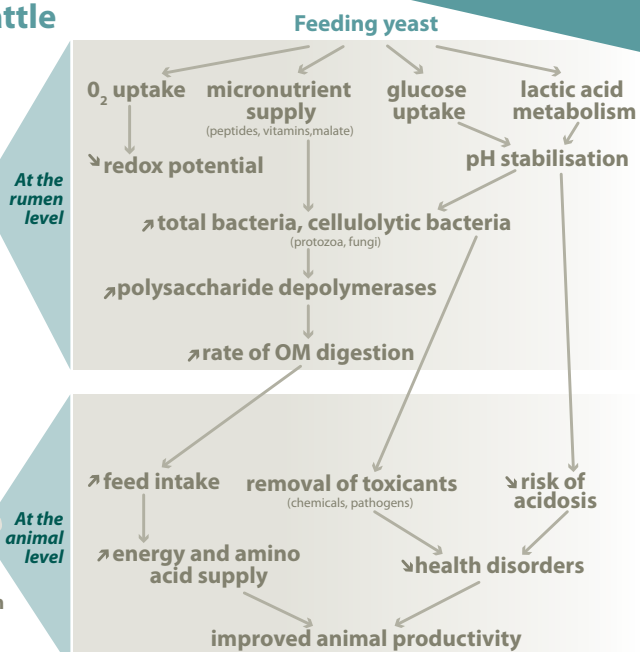
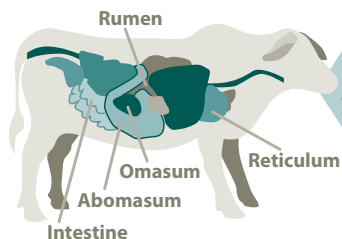
Studies have demonstrated the beneficial effects of yeast to overall rumen function, as seen in the image below. Yeast in the rumen of livestock may assist with:

- ✓ Rumen available natural protein
- ✓ Rumen available nutrients/minerals
- ✓ Increased feed intake
- ✓ Enhanced feed efficiency
- ✓ Reduced risk of acidosis
- ✓ Improved immune system

Effect of yeast in the cattle digestion system



Yeast



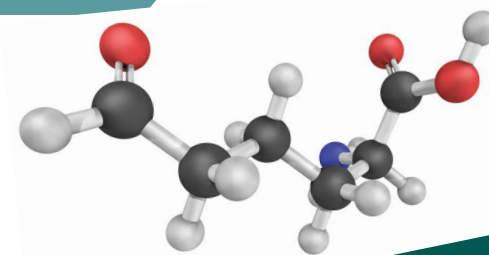
Jouany, J. (2006) 'Optimising rumen functions in the close-up transition period and early lactation to drive dry matter intake and energy balance in cows', *Animal Reproduction Science*, Vol. 96, pp. 250-264, Elsevier, France

ESSENTIAL AMINO ACIDS

Amino acids are the building blocks used to make protein. Ruminants (cattle) have the ability to synthesise most amino acids from non-protein sources.

Essential amino acids are those that cannot be synthesised in the animal's body and so it must find these in the diet. The animal's protein production is limited by the particular amino acid that is in shortest supply in relation to its requirement for forming the protein. Poor pasture and feed may not deliver essential amino acids and this is something that urea cannot deliver either. The **SuplaFlo range** contains essential amino acids including:

- ✓ Lysine
- ✓ Phenylalanine
- ✓ Valine
- ✓ Threonine
- ✓ Tryptophane
- ✓ Isoleucine
- ✓ Methionine
- ✓ Histidine
- ✓ Arginine
- ✓ Leucine



Lysine amino acid

BREEDERS AND DAIRY CATTLE

Lysine, methionine and arginine are the most commonly deficient essential amino acids in this cattle class. They are the key components for milk production.

BEEF CATTLE

For calves and growing cattle, the most important essential amino acids are *methionine, lysine, isoleucine, threonine and leucine*. They are key components for body growth and maturity.



MICRONUTRIENTS

The **SuplaFlo range** offers a number of micronutrients to accommodate areas of deficiencies in feed, or to enhance the grazing and base feeding regime, in order to boost cattle health and condition.

Some key micronutrients that are commonly deficient in Australian grazing country for cattle, and which the **SuplaFlo range** offers, are:

COPPER (Cu)

Deficiencies are likely to occur in:

- Coastal sandy soils, granite soils, peat swamps
- Extended periods on green feed
- Breeding stock
- Growing stock.

** Signs of copper deficiency include rough coat, sandy-coloured Hereford or bronze-tinged Angus, poor growth/diarrhea.*

SELENIUM (Se)

Deficiencies are likely to occur in:

- Coastal sandy soils, acidic soils, sedimentary and granite soils as well as high rainfall areas
- Lush green feed periods
- Young growing cattle.

** Signs of selenium deficiency include stiff legged gait, sudden death, poor growth.*

COBALT (Co)

Deficiencies are likely to occur in:

- Calcareous sands, high rainfall granite soils and krasnozem
- Young growing cattle.

** Signs of cobalt deficiency include ill thrift, emaciation.*

The **SuplaFlo range** includes a range of nutrients and micronutrients including:

- ✓ Calcium

✓ Magnesium

✓ Sulphur

✓ Potassium

✓ Sodium

✓ Cobalt
- ✓ Copper

✓ Iodine

✓ Manganese

✓ Selenium

✓ Zinc

PRODUCT SELECTOR TO SUIT YOUR CATTLE

	SuplaFlo®	SuplaFlo +3%Urea	SuplaFlo +4%Urea	SuplaFlo +5%Urea	SuplaFlo +6%Urea	OrganicFlo
	SuplaFlo +Phos	SuplaFlo +3%Urea+Phos	SuplaFlo +4%Urea+Phos	SuplaFlo +5%Urea+Phos	SuplaFlo +6%Urea+Phos	
Pregnant or lactating breeder cows	✓(a)	✗	✗	✓	✓	✓(a)
Dry finishing steers/heifers	✓ (a)	✓	✓	✓	✓	✓(a)
Weaners	✓	✗	✗	✗	✗	✓
Bulls	✓ (a)	✗	✗	✓	✓	✓(a)
Organic certified cattle (ACO/ USDA NOP accredited)	✗	✗	✗	✗	✗	✓(a)

(a) These products do not contain urea and may exceed feed intake in dry conditions.

Use the **SuplaFlo range** as part of your feeding program to:

- ✓ Supplement feed heifer/cow breeders prior to joining with bulls
- ✓ Supplement breeders through pregnancy, particularly through poor pasture conditions
- ✓ Encourage growth in young cattle
- ✓ Finish steer/heifers to optimise beef production
- ✓ Supplement cattle in times where poor pasture/ low quality feed may limit nutrition
- ✓ Wean calves to develop rumen health and growth
- ✓ Supplement bulls prior to joining breeders.

FEEDING METHOD

The **SuplaFlo range** can be fed freely by open trough. In drought conditions where excessive

feeding may occur, lick wheel troughs may assist in controlling intake.

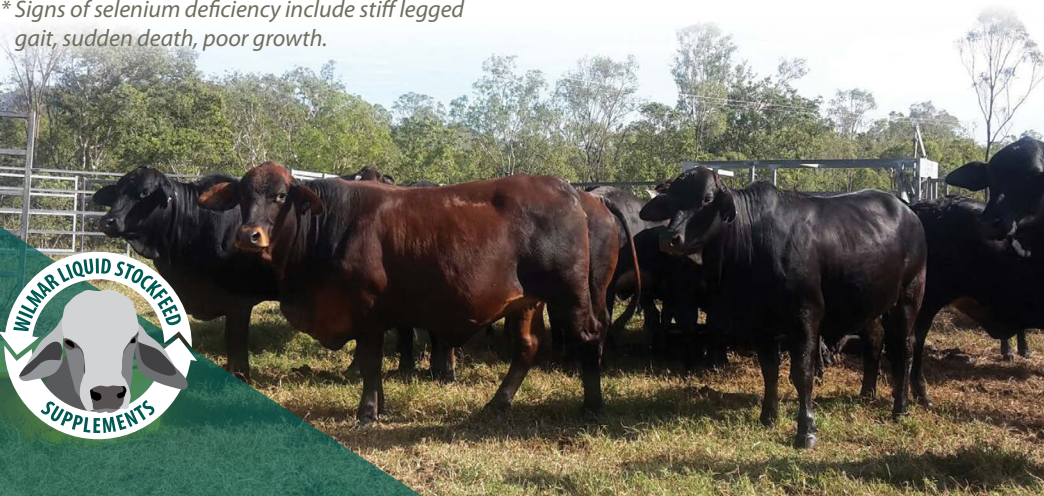
It can also be added to feed immediately before feeding out.

STORAGE CONDITIONS

SuplaFlo must be stored in a feed-grade or molasses-grade tank. Water-grade or concrete tanks may not be suitable. Ensure storage vessels are vermin-proof, weather-proof and have vapour vents. If storing for long periods, circulate the tank from the bottom to ensure adequate suspension of nutrients and prevent settling.

SHELF LIFE

Use within six months from batch date. Clean troughs regularly to preserve the best quality for your livestock.



OUR PRODUCT RANGE

STOCKFEED WITH UREA

PRODUCT	BEST SUITED	DESCRIPTION
	<ul style="list-style-type: none"> ✓ Weaner cattle ✓ Cattle in yards ✓ Sheep 	SuplaFlo offers a safe and highly digestible form of natural protein, amino acids and micronutrients. It does not contain urea, making it safe to feed to younger cattle, cattle in yards and sheep in grazing programs.
	<ul style="list-style-type: none"> ✓ Weaner cattle ✓ Cattle in yards ✓ Sheep 	SuplaFlo+Phos helps address appetite-limiting phosphorus deficiencies in some livestock. It contains natural protein, essential nutrients and added phosphorus to maintain livestock condition. It is best suited to production cattle.
	<ul style="list-style-type: none"> ✓ Dry cattle ✓ Pregnant cattle ✓ Lactating cattle ✓ Bulls 	SuplaFlo+Urea is available with additions of 3%-6% urea to best suit the nutritional needs of livestock. The addition of urea helps improve rumen function and will boost crude protein in the diet when feed and pasture digestibility declines in the dry season.
	<ul style="list-style-type: none"> ✓ Dry cattle ✓ Pregnant cattle ✓ Lactating cattle ✓ Bulls 	SuplaFlo+Urea+Phos is available with additions of 3%-6% urea, plus added phosphorus, to best suit the nutritional needs of livestock.
	<ul style="list-style-type: none"> ✓ ACO/USDA NOP cattle or sheep 	OrganicFlo is Australian Certified Organic and USDA National Organic Program (NOP) ready. It contains natural protein and essential nutrients to maintain livestock condition.

SAFE FEEDING OF UREA

SuplaFlo with added urea e.g. **SuplaFlo+Urea (3/4/5/6%)** may pose a risk of urea poisoning if not fed correctly to cattle. Below is best practice for feeding urea products:

- If cattle have not been previously supplemented, start with a high urea concentration (urea is unpalatable) and only provide a small amount in the trough to cattle. Increase it slowly and gradually.
- Ensure urea supplements are positioned well away from water troughs. Having water in close proximity may encourage further consumption of urea supplements.
- Ensure drinking water for cattle is clean with a pH between 6.2 and 7.

- Monitor feed intake and ensure that a feed program with urea is consistent for cattle. Once started, regular or daily consumption of the supplement should continue, to avoid sudden changes which may impact rumen biota.

- If cattle unavoidably miss out on urea supplementation for a couple of days, restart them at a lower intake level.
- If cattle are found dead in very close proximity to the supplement, remove supplement from herd to avoid potential further deaths.

Please refer to our **Wilmar AgServices Stockfeed with Urea User Guide** for more information.





For more information
call 1800 881 957 or visit
www.wilmarsugar-anz.com


wilmar