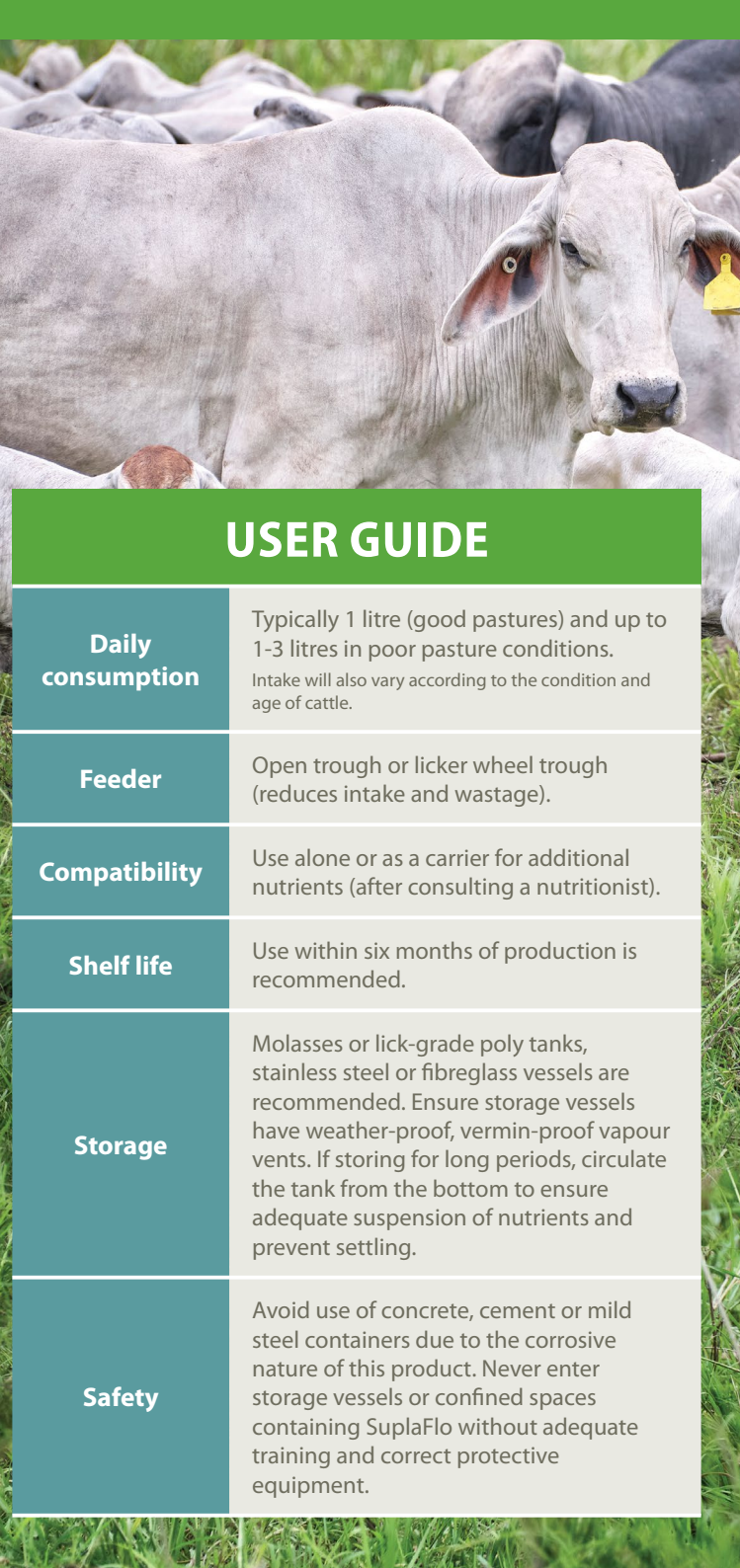




A **high-phosphorus**
supplement with natural protein
and minerals to support better
livestock health and production





USER GUIDE

Daily consumption	Typically 1 litre (good pastures) and up to 1-3 litres in poor pasture conditions. Intake will also vary according to the condition and age of cattle.
Feeder	Open trough or licker wheel trough (reduces intake and wastage).
Compatibility	Use alone or as a carrier for additional nutrients (after consulting a nutritionist).
Shelf life	Use within six months of production is recommended.
Storage	Molasses or lick-grade poly tanks, stainless steel or fibreglass vessels are recommended. Ensure storage vessels have weather-proof, vermin-proof vapour vents. If storing for long periods, circulate the tank from the bottom to ensure adequate suspension of nutrients and prevent settling.
Safety	Avoid use of concrete, cement or mild steel containers due to the corrosive nature of this product. Never enter storage vessels or confined spaces containing SuplaFlo without adequate training and correct protective equipment.



SUPLAFLO[®] + MAX
NATURAL PROTEIN FOR CATTLE
LIQUID SUPPLEMENTS PHOS

KEY FEATURES

- ✓ Rain safe
- ✓ 10% natural protein¹
- ✓ High phosphorus
- ✓ Natural micronutrients

GUARANTEED CRUDE PROTEIN ANALYSIS²

Element	Units	SuplaFlo+Max Phos
Total crude protein	%w/v	3.08
Minimum natural protein	%w/v	3.08
Minimum equivalent crude protein	%w/v	0.00
Urea	%w/v	0.00

TYPICAL ANALYSIS³

Element	Units	SuplaFlo+Max Phos
Dry matter	%w/v	34.07
Fat	%w/v	0.42
ME ⁴ (Ruminant)	MJ/L	3.56
Calcium (Ca)	g/L	6.28
Phosphorus (P)	g/L	6.37
Magnesium (Mg)	g/L	4.04
Sulphur (S)	g/L	4.15
Potassium (K)	g/L	28.05
Sodium (Na)	g/L	1.23
Cobalt (Co)	mg/L	0.67
Copper (Cu)	mg/L	1.68
Iodine (I)	mg/L	0.67
Manganese (Mn)	mg/L	38.15
Selenium (Se)	mg/L	0.11
Zinc (Zn)	mg/L	5.61
Specific gravity	kg/L	1.15

Refer to our [Safety Data Sheets](#) for further product information (available at www.wilmarsugar-anz.com).



WILMAR LIQUID STOCKFEED SUPPLEMENTS

Our natural-protein liquid supplements are based on 100% Australian fermented molasses and produced at Sarina. They offer a simple and nutritious solution to support your livestock program.

- ✓ Natural protein and essential amino acids critical for lactation in breeders
- ✓ Developed from yeast, a highly digestible protein source for the rumen
- ✓ Source of valuable minerals and micronutrients

SuplaFlo+Max Phos is formulated with added phosphorus to address phosphorus deficiencies, or to improve performance in the wet season.

Refer to our End of Waste Code: https://environment.des.qld.gov.au/_data/assets/pdf_file/0023/88232/wr-eowc-approved-dunder.pdf



Available at

DATE OF ISSUE APRIL 2023



Wilmar AgServices

1800 881 957

stockfeedsales@wilmar.com.au

Bruce Highway, Sarina QLD 4737

www.wilmarsugar-anz.com

Notes

- (1) All comparisons and contents are calculated on a dry matter basis, unless otherwise stated. Dry matter is determined via the vacuum dry matter method at 600°C.
- (2) Nutrition figures are calculated from the nutrition values of their respective ingredients.
- (3) All values are typical values. The variability in the molasses composition from different sources may cause some variability in the nutrient composition of final products. Nutrition figures are calculated from the nutrition values of their respective ingredients.
- (4) ME is calculated via the FLIAC AUSMEAT accredited formula.

Disclaimer

Before using livestock feed products it is strongly recommended that reliable nutritional advice is obtained. Feeds may affect animal health. Climatic, soil and forage conditions, as well as livestock management practices, are beyond the control of Wilmar and cannot be foreseen. Similarly the storage, handling and use of this product are beyond the control of Wilmar. Should you purchase any of the products contained in this booklet from Wilmar, you will be bound by the purchase [terms and conditions](#) as set out on our website at www.wilmarsugar-anz.com.