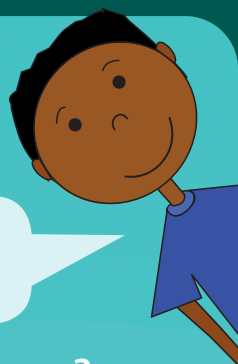


MIX AND MATCH



Match the cane train safety sign to its meaning

1.



A. Give way to any oncoming cane trains

2.



B. People should not walk, drive or ride on a cane railway bridge. They're a restricted area

5.



D. A cane railway crossing is ahead

E. All traffic should stop and give way to a cane train when the red lights are flashing

3.



4.



C. A cane railway crossing with lights is ahead

CANE TRAIN SAFETY ACTIVITY BOOK

Use your train brain with Sam to learn how to stay safe around cane trains.



wilmar

WORD SEARCH



Find and circle the words below

- Lights
- Signs
- Stop
- Give way
- Safety
- Locomotive
- Crossing
- Train Brain
- Wilmar
- Crushing
- Mill
- Sugarcane

G	W	N	E	I	N	S	S	T	O	I	E	N	L
I	U	T	R	H	T	O	I	I	L	S	V	G	C
V	F	E	O	L	A	W	E	S	G	S	I	S	P
E	R	N	L	T	S	O	T	N	P	T	T	O	R
W	S	I	S	A	F	E	T	Y	A	R	O	E	R
A	M	I	W	H	O	Y	S	C	O	A	M	N	S
Y	N	W	E	R	U	E	A	N	R	I	O	A	T
A	E	A	N	B	H	G	S	A	G	N	C	C	O
T	W	H	C	E	S	T	M	E	B	B	O	R	P
N	I	T	M	S	H	L	L	R	I	R	L	A	S
I	N	G	E	G	I	R	S	L	T	A	U	G	N
F	A	S	I	W	F	O	A	I	I	I	G	U	G
A	L	L	S	C	R	O	S	S	I	N	G	S	I
C	R	U	S	H	I	N	G	A	S	H	N	S	S

All answers are available at www.wilmarsugar-anz.com/activity-book-answers



CRACK THE CODE

Use the code below to discover the hidden message.



WEIGH IT UP

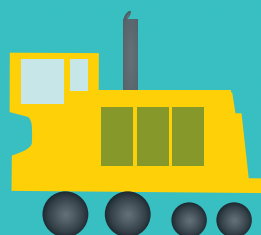
Cane trains are big and heavy. They can take up to 1km to stop.

That's why you should NEVER play around Wilmar's cane railway network.

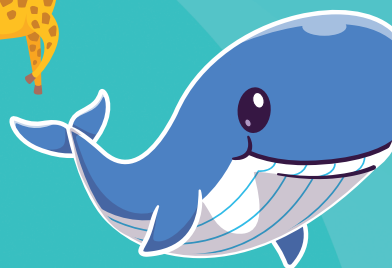
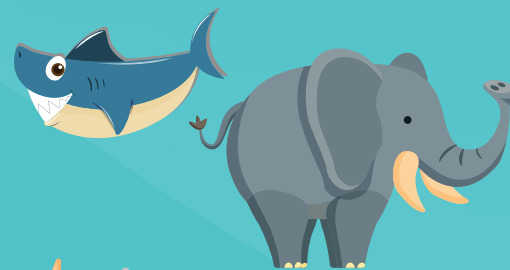
Wilmar's locos and bins weigh the same as some big animals. See if you can correctly pick which ones:



(4-6 tonnes)



(40 tonnes)



COLOUR IT IN



Use your train brain

Give way to cane trains

