

18 October 2019

NEWS RELEASE

Pioneer Mill back up and running

Wilmar's Pioneer Mill started crushing again last night (*Thursday 17 October*) – just 12 days after a fire caused major damage to the site's bagasse conveyor system.

General Manager Operations Mike McLeod praised the large team of Wilmar employees who banded together to repair the damage and recommission the factory in such a short timeframe.

"It was a herculean effort by all involved," Mr McLeod said.

"We pulled out all stops to get the factory up and running as soon as possible. We had dedicated crews working around the clock, we brought in additional skilled employees from our other milling regions and we expedited the delivery of replacement gear.

"Our original timeline was to re-start operations on Monday 21 October. But we completed the repair work well ahead of schedule and got the factory up and running four days early."

The fire in the mill's bagasse conveyor system happened about 6pm on Saturday 5 October. Nobody was hurt, but the blaze caused extensive damage to the conveyors and associated electrical systems.

Mr McLeod said investigations into the cause of the fire were ongoing.

General Manager Cane Supply and Grower Relations Paul Giordani said, despite the fire, the Burdekin crush would still finish in mid-November.

"Before the fire, we were forecasting the last mill to crush out in the Burdekin on 13 November. Our current projections have Pioneer Mill being the last to finish, on 18 November."

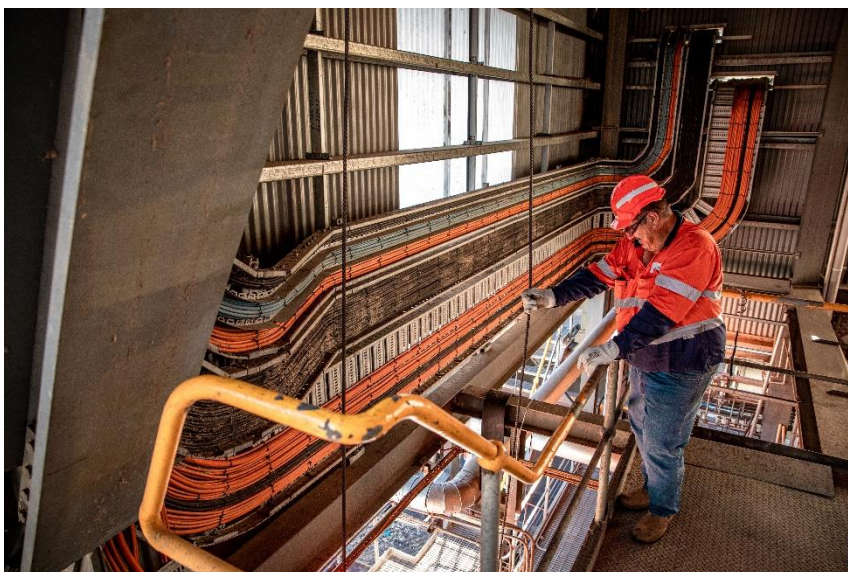
Mr Giordani said logistics officers had worked closely with growers and harvesting groups to transfer Pioneer area cane to Wilmar's other Burdekin mills for processing while repairs were under way.

“Wilmar’s logistics officers and local harvesting contractors have done an excellent job in moving Pioneer cane out to our other mills, in order to minimise the impact of this incident on our Pioneer cane suppliers.

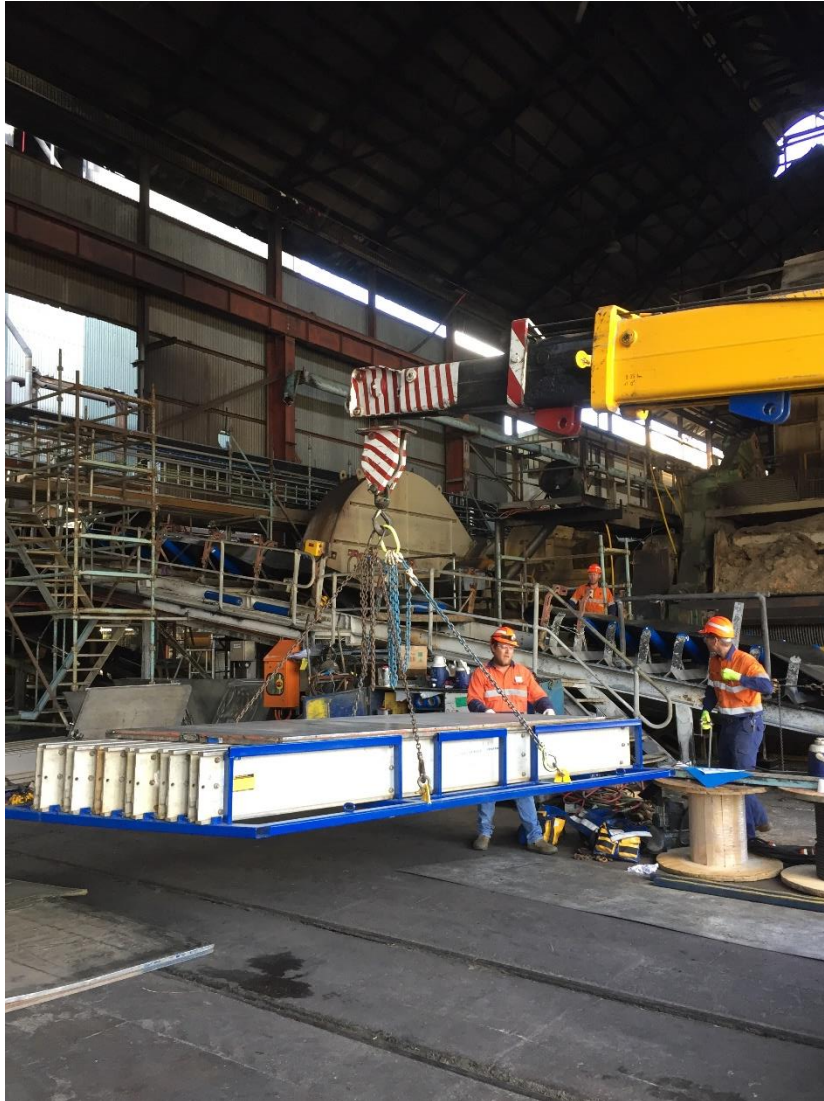
“We’d like to thank all Burdekin growers, harvesting contractors, external contractors and our people for pulling together to get through this challenging time.”



CAPTION: The team of skilled Wilmar employees who banded together to repair the fire-damaged Pioneer Mill – four days earlier than forecast.



CAPTION: Wilmar’s Keith Goodchild works on repairs to Pioneer Mill. He is surrounded by some of the 1.5 kilometres of new electrical cable installed after the fire.



CAPTION: Wilmar's Wes Sutcliffe (left) works with Fenner Dunlop contractors to set up equipment for repairs to the No. 1 bagasse conveyor belt at Pioneer Mill.

Media contact: Leanne Oliveri 0447 791 226